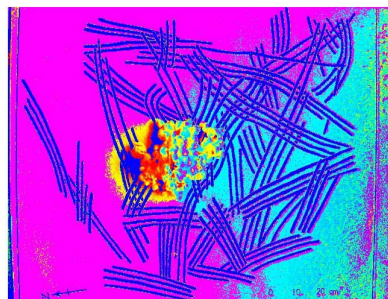
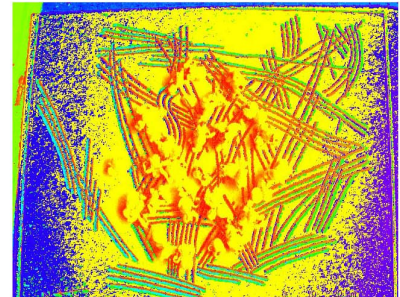
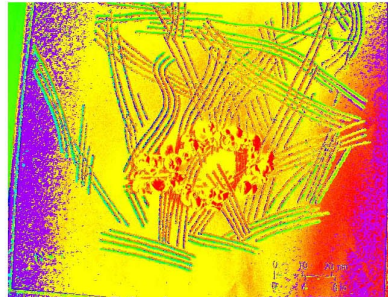
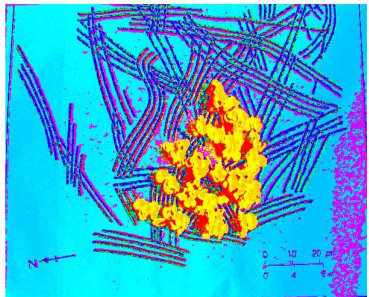
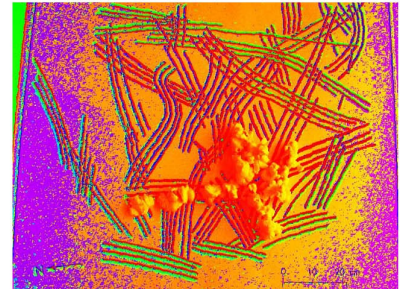
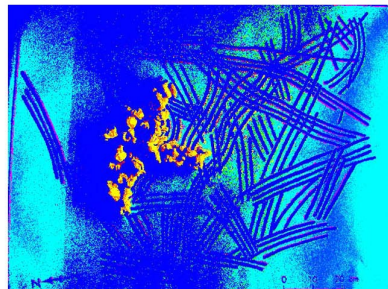
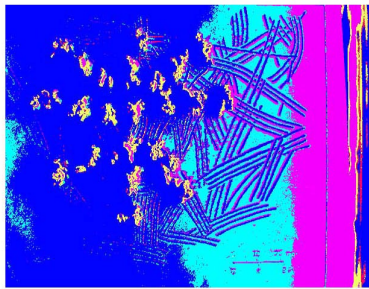
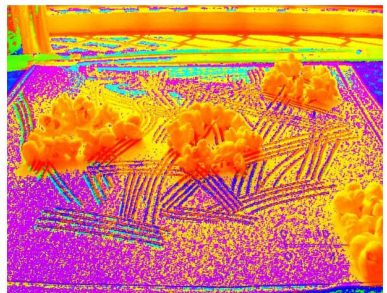
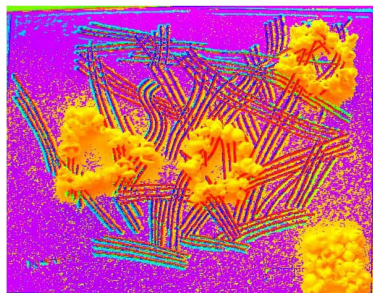
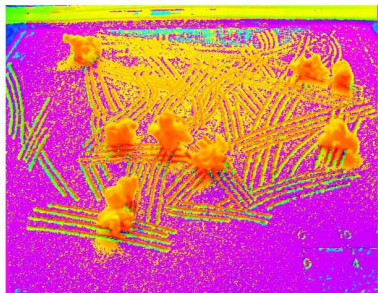
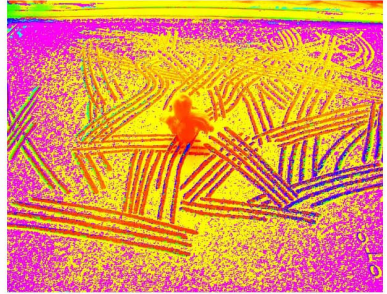
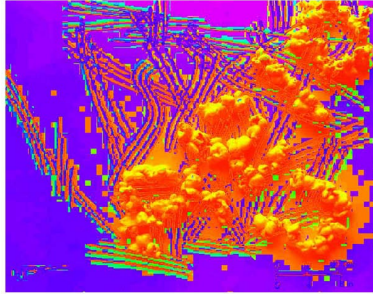
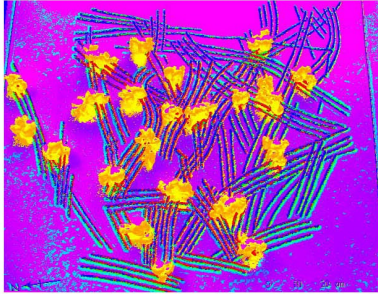
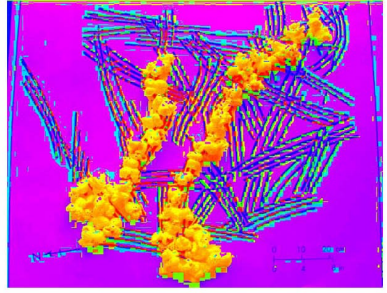
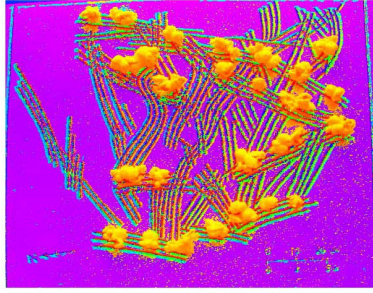
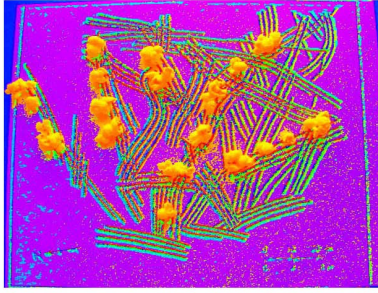


ORANGE-MAN STRING AND YELLOW-MACHINE ENSEMBLE

- Clefs are from Rock Markings Non-Linear, But Players are instructed to think about how they were made, hands on the ceiling, to follow the path
- Harmony in the Colour, Clusters in Depth and Chromatics in Displacement of Colour
- Melody, Rhythm in the Grouping, Placement, Shape, Contours of Popcorn on the Clefs.
- Form in the Symmetry of Placement
- Players can play just the one or a series.





ORANGE-MAN STRING AND YELLOW-MACHINE ENSEMBLE

This process references oral tradition which is important in all histories of music but especially in Australian Aboriginal Music and Javanese Gamelan, which are both featured in this composition,

Players were given homework and asked to familiarise themselves with these familiar tunes. On the performance date they are asked to use the Orange and Yellow Ensemble Instruments to mimic these songs.

Please play to your memory 30 seconds of Beethovens Fifth Symphony Movt 1
then

Please play to your memory 30 seconds of Gershwin's Rhapsody In Blue